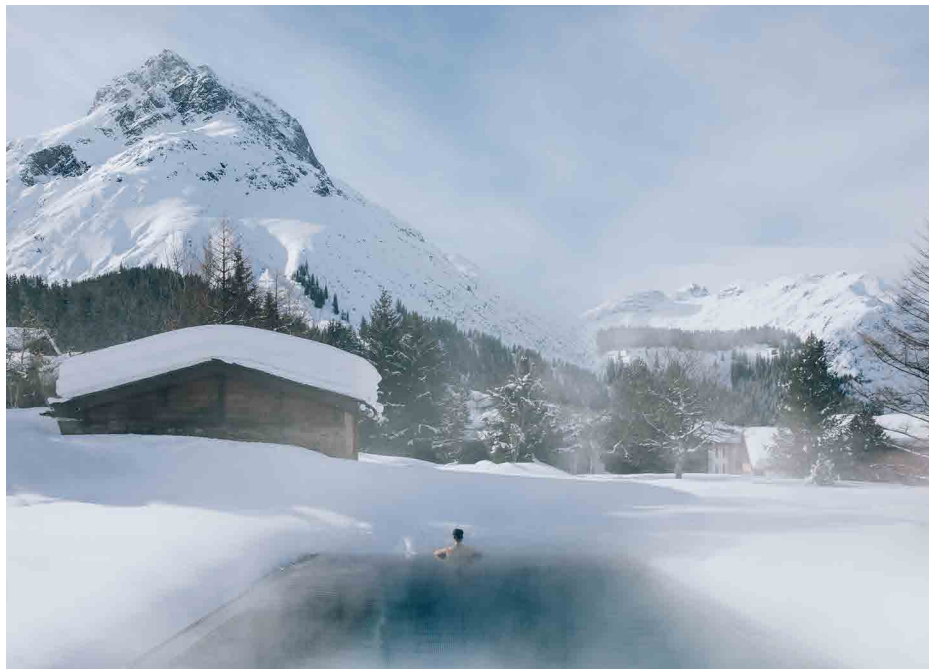




## *Travel Agent Guide*

Summer 2025 &  
Winter 2025/26



# How you can reach us

Lech at the Arlberg is located in the federal state of Vorarlberg in Austria, in close proximity to Germany, Switzerland and Liechtenstein. This is how you can reach us:

## ARRIVAL BY PLANE



The nearest airport is in Innsbruck (110 km, 68 mi) with good train connections to Langen and St. Anton. Zurich International Airport (200 km, 125 mi) and Munich Airport (230 km, 140 mi) can be reached in approx. two hours. Transfers are also available to all airports and there is an airport shuttle bus to Zurich Airport. For the airport bus, you can contact our partner Arlberg Express ([www.arlbergexpress.com](http://www.arlbergexpress.com)).



## ARRIVAL BY CAR

You can reach Lech via the Inntalautobahn A12 and the Arlbergpass from Innsbruck or via the Rheintalautobahn A14 from the west. On the Flexenstraße you pass Zürs and then reach Lech. In summer, you can also take the scenic routes over the Bregenzerwald and the Hochtannberg as well as over the Tyrolean Lechtal.

Please note: even if navigation systems often disagree: the Lech-Warth route is closed in winter!

## ARRIVAL BY TRAIN

The nearest international express train stations are Langen (17 km, 10 mi) and St. Anton (20 km, 12 mi).

There are regular bus and taxi services to Lech from the train stations, which approximately take 30 minutes. Whether you require a private transfer or a group transfer, our concierge team will be happy to assist. Please email your enquiry to [info@postlech.com](mailto:info@postlech.com).



HOTEL POST LECH ARLBERG

# Welcome Home



A member of the prestigious Relais & Châteaux Hotels since 1976, the Post Lech Arlberg is centrally located in the renowned ski resort of Lech.

## THE HOUSE

Our luxury 5-star family hotel offers 46 generously proportioned rooms and suites. A collection of local antiques and loving attention to detail imbue each room and suite with the alpine style that gives the hotel its unique character.



## TRADITION AND VISION

### Journey into the past

The history of the hotel begins in 1937, when Erich Moosbrugger, a passionate skier from the Bregenzerwald region, and his wife Irma took over the former inn.

In 1964, the eldest son, Franz, married. Together with his wife Kristl, Franz took over the business from Erich and Irma Moosbrugger. Just one year later, Franz and Kristl Moosbrugger built an indoor swimming pool. It was one of the first in Austria. The couple had three children: Michael (1966), Johanna (1967), and Florian (1969). Franz Moosbrugger, a passionate mountaineer, died suddenly of altitude sickness in the Himalayas in 1988.

After his mother had managed the hotel alone for many years, Florian Moosbrugger and his wife Sandra have been managing the hotel since 1999. In 2004, Post Lech Arlberg was named Hotel of the Year and Florian Moosbrugger was named *Hotelier of the Year*.

What was once a farmhouse with thick walls, a few guest rooms and an adjoining general store has been transformed over the decades into a luxury hotel that has retained its original character.



# Information about dining options



## FINE DINING À LA POST

Under the direction of Head Chef Michael Volcanjsek, our kitchen combines regional flavors with international flair, creating refined, modern dishes inspired by the Arlberg's culinary heritage.

Distinctive design and sensory charm – our restaurants at Post Lech Arlberg promise indulgent dining in unique settings:

### PANORAMARESTAURANT „POSTBLICK“

Our newest space, opened for the Moosbrugger family's 80th anniversary, offers panoramic views and innovative cuisine for house and à la carte guests.



### „JÄGERSTUBE“

A cozy, hunting lodge-style setting serving creative dishes by Chef Michael Volcanjsek.



### „EMOSTUBE“

Named after artist Emo Henrich, this traditional Austrian space offers classic cuisine in a relaxed atmosphere. Enjoy the regional specialties and our popular Fondue Chinoise.



### „KUTSCHERSTUBE“

The hotel's inn-style restaurant, where guests enjoy Austrian favorites and half-board dining in a charming alpine ambiance.

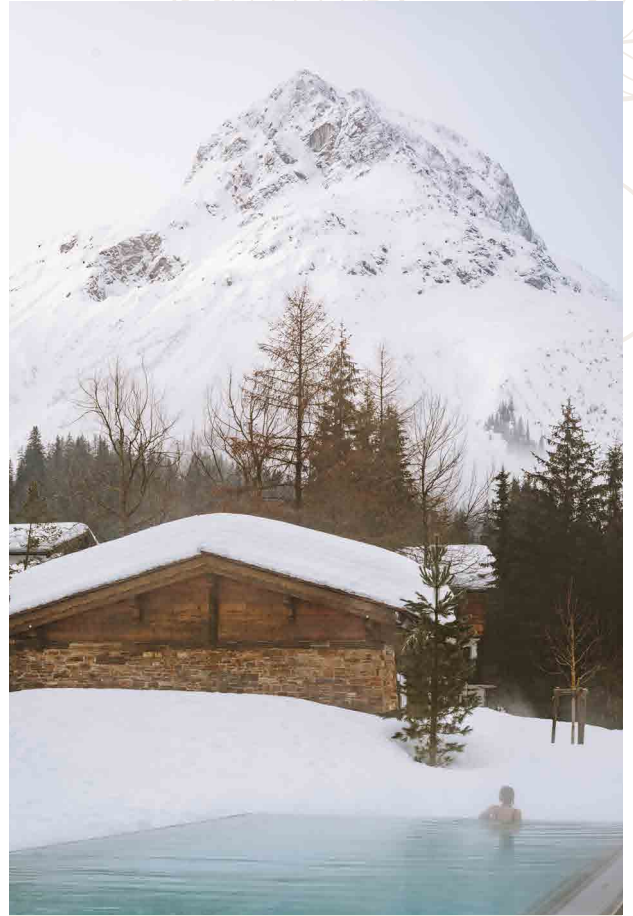
## Pure relaxation

The Post Beauty & Spa offers an exceptional spa experience set against the breathtaking backdrop of the Austrian Alps. At the heart of this serene oasis is a 6,000 m<sup>2</sup> Alpine Panorama Garden, where guests can relax and rejuvenate surrounded by nature.

One of the highlights is the 15-metre long heated outdoor pool, offering uninterrupted panoramic views of the Omeshorn mountain - a truly stunning place to unwind in any season. For families, the spa also features a children's pool with a slide and a separate baby pool, making it a welcoming retreat for guests of all ages.

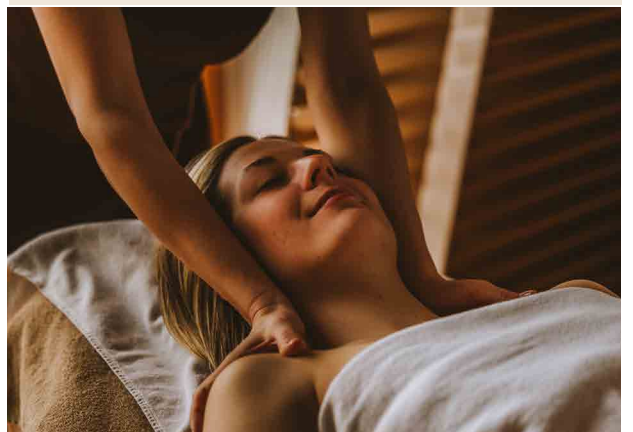


The spa's sauna area includes relaxing amenities such as a brine steam bath and a tranquil outdoor grotto, providing warmth and serenity after a day in the mountains. Guests can enjoy a variety of treatments in our four peaceful treatment rooms, each designed to promote deep relaxation and holistic well-being.



The spa uses high-end skincare and wellness products from luxury brands like Cellcosmet, Chanel, Guerlain, and La Prairie, ensuring the highest standard of care.

To complement the wellness experience, the in-house perfumery offers a curated selection of premium fragrances and cosmetics.



EXPERIENCE UNIQUE FESTIVITIES



# Weddings & Cooperate Events

Whether you are organizing a wedding, birthday celebration, family gathering, or professional seminar - our hotel provides an elegant and versatile setting for every occasion.

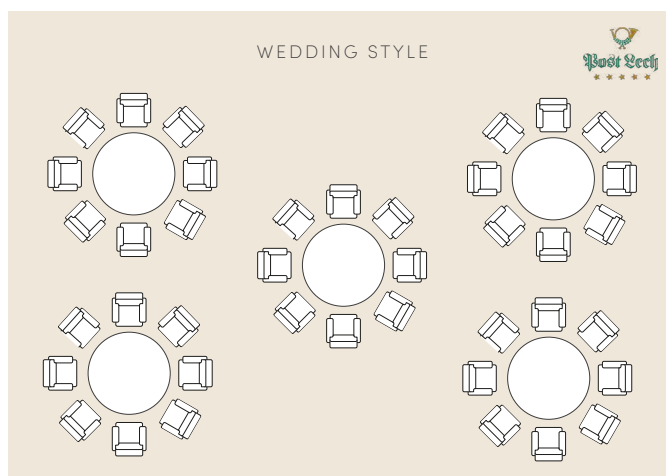
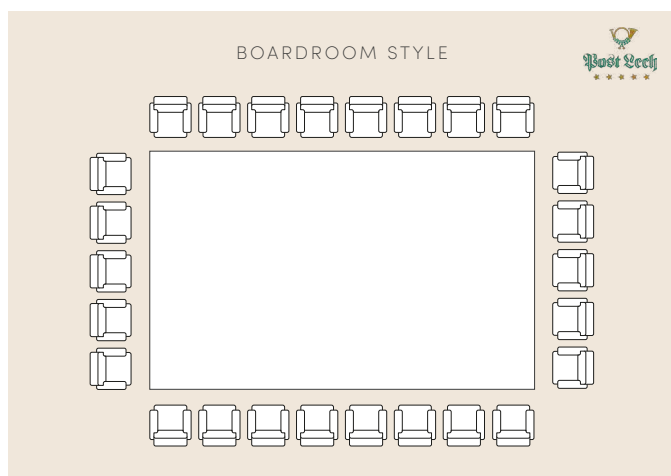
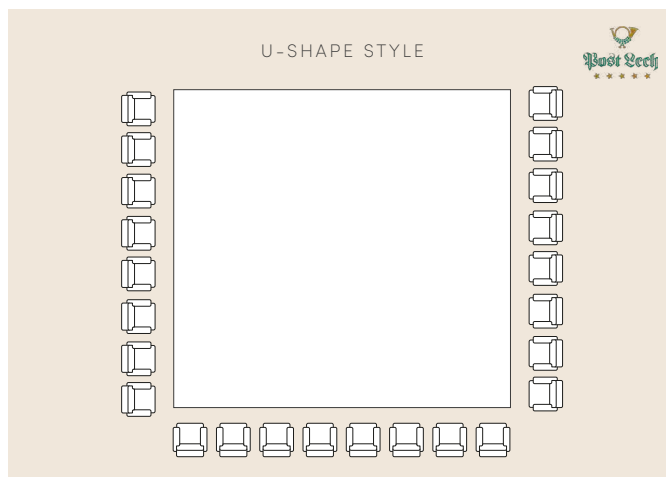
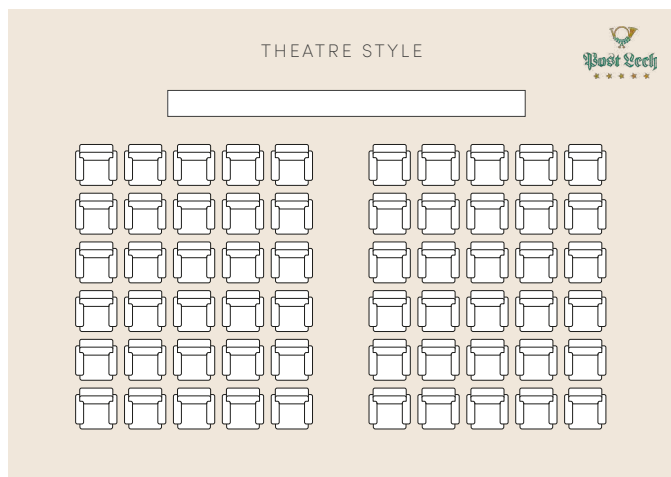
We take great pride in hosting a wide range of events, tailored to meet your specific requirements with the utmost attention to detail.

Our Post Lech Arlberg offers 4 distinguished event venues at your disposal: the Hubertushall (145 sqm), the Florianistube (79 sqm), the Jägerstube (33 sqm), and the Emostube (42 sqm) - each offering its own unique ambiance and adaptable layout to ensure a seamless and memorable experience.



## SETUP IN THE HUBERTUSHALL:

Conference meetings: 30 seats | Banquets: 50 seats | Theatres: 60 seats | U-Shaped: 25 seats



ENJOY THE SILENCE, EXPERIENCE THE MOUNTAINS

# Summer holidays at the Post



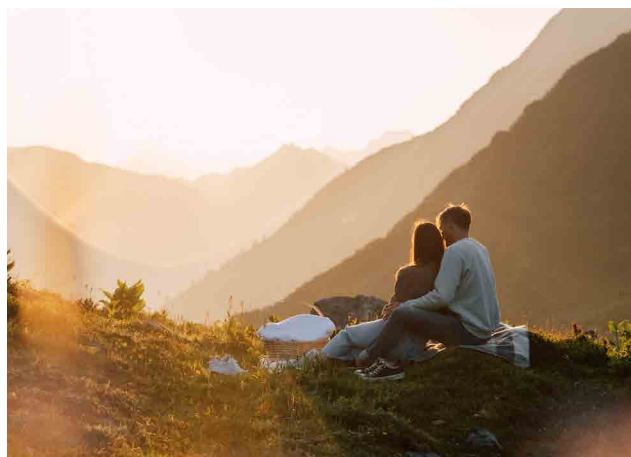
## BACK TO PRISTINE NATURE

The Arlberg region is a true natural paradise. Pristine flora and fauna, crystalline spring water from the mountains, fresh mountain air—the ideal conditions for sports enthusiasts and relaxation-seekers alike.

And the Post's excellent location in Lech means many activities and excursion destinations are accessible on foot.

With experienced mountain guides, our guests can go on big and small hikes, eat Kässpätzle on our mountain hut "Formarin" or have breakfast in the middle of blooming summer meadows. Golf, archery and fishing are just some of the pursuits that can be enjoyed furthermore.

Our partner "Arlberg Alpin" offers a varied weekly program for the whole family during the summer months. **The ultimate extra: during the summer season all our guests receive the "Lech Card" from one night's stay with us.**



## Winter holidays at the Post



Holidays in Lech at the Arlberg in winter: ascents into the deep snow-covered mountain world, wonderful downhill runs or walks through untouched snow landscapes, fascinating slopes, cross-country skiing tours, ice skating, curling, sledging and snowshoeing are just some of the many attractions. Around Lech and Zürs, non-skiers will find 40 km of prepared winter hiking trails.

Staying in Lech - at the Hotel next to the gondola in Lech. The world-famous Arlberg, also called the cradle of skiing, impresses with 88 lifts, 350 km of groomed slopes and 200 km of deep-snow runs and is right on your doorstep. A single ski pass is enough to discover the entire ski area.

ENJOY THE LUXURY

# Rooms & Suites



## Single rooms

1 person | approx. 25 m<sup>2</sup>

Our single rooms are all unique: up to 25 m<sup>2</sup> in size, lovingly furnished with sofa and coffee table. All single rooms have a private bathroom with tub and toilet.



## Double rooms

2 persons | approx. 30 m<sup>2</sup>

Relax in the comfortable sitting area and enjoy your room with 26 m<sup>2</sup> to 34 m<sup>2</sup> or make yourself comfortable in the spacious double bed. Some rooms have a private balcony which invites to sunbathing. All double rooms have a private bathroom with tub and toilet.



## Jäger rooms

2 persons | approx. 35 m<sup>2</sup>

Decorated in the traditional hunting style of the "Post", you reside in the "Jägerzimmer (hunter's room)" on cosy 35 m<sup>2</sup>. Hunting motifs and noble rustic furniture create a very special atmosphere. The spacious living / bedrooms are partly equipped with tiled stoves or balconies. Here, too, a bathroom with tub and toilet are a matter of course.



## Postillion rooms

2 persons | approx. 40 m<sup>2</sup>

From the inviting anteroom to the comfortable living / sleeping area with sitting area and tiled stove / fireplace to the walk-in closet, the Postillion rooms offer generous cosiness on 40 m<sup>2</sup>. The bathrooms are of course all equipped with tub, partly also with bidet or shower with steam bath.



ENJOY THE LUXURY

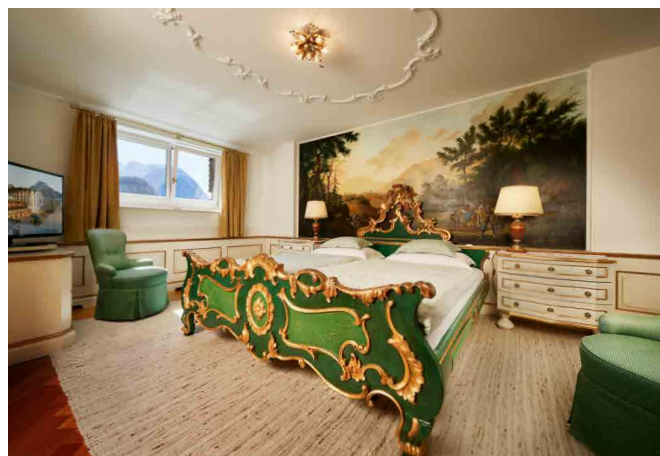
# Rooms & Suites



## Postmeister rooms

2-3 persons | approx. 50 m<sup>2</sup>

50 – 55 cosy square metres ensure with a separate living room or optically separable sitting area, tiled stove or fireplace – cosiness all over the place. The bathrooms are of course all equipped with tub, partly also with bidet and shower with steam bath.



## Herzog suites

2-4 persons | approx. 55 m<sup>2</sup>

Here you have even more space for your holiday dreams: bedroom with double bed and separate or optically separated living room, open fireplace or tiled stove on 55 cosy square metres. The bathrooms are of course all equipped with tub, partly also with bidet and shower with steam bath.



## Fürsten suites

2-4 persons | approx. 70 m<sup>2</sup>

60 – 80 m<sup>2</sup> with double bed, separate or spatially separated living room promise a truly princely holiday home. The Fürsten suites are partly equipped with an open fireplace or tiled stove; two have a private terrace. The bathrooms are of course all equipped with tub, partly also with bidet and shower with steam bath.



## Kaiser suite

2 persons | approx. 114 m<sup>2</sup>

The exclusive ambience of this 114 m<sup>2</sup> large suite with open fireplace, a large bay window and two secluded balconies is decorated in the typical style of the property, but with modern accents which provide a very special feel-good factor. The bathroom with its freestanding bathtub, extra shower and steam bath leaves nothing to be desired. Bidet and separate toilet are a matter of course.

# Private & exclusive: Chalet Saege

4-8 persons | approx. 130m<sup>2</sup>



The "Säge" chalet is opposite the main building. It offers two bedrooms, two living areas with tiled stoves, a 130 m<sup>2</sup> kitchen and a terrace. Two bathrooms with a steam bath ensure personal SPA experiences and moments of relaxation. A ladder staircase leads to the charming „upper floor“, in our Heidi attic. A true paradise for children. The homely atmosphere will let you experience unforgettable hours.

**Note: The Chalet Säge is bookable only in winter season.**

THE FOLLOWING „EXTRAS“ ARE A PART OF OUR OFFERING:

- All rooms: a bathtub or shower, WC, hairdryer, safe, minibar, telephone, satellight TV
- Broadband internet access via WIFI throughout the entire hotel
- A welcome cocktail with the Moosbrugger family once a week
- Outdoor swimming pool, indoor kid's pool, sauna and relaxation area
- Fitness with a wide range of equipment
- Special surprise for birthdays and other personal celebrations
- Weekly programme
- Welcome gift in all rooms
- Soft and comfy bathrobes
- Shoes cleaned and polished, each morning
- All daily newspapers are digitally available through our Guestnet platform
- Afternoon tea from 4 pm. to 5:30 pm.
- Outdoor parking spaces

## Contact Information

**Post Lech Arlberg  
Family Moosbrugger  
Relais & Châteaux  
Dorf 11  
6764 Lech am Arlberg  
Austria**

Telephone: +4355832206-0  
Email: [info@postlech.com](mailto:info@postlech.com)  
Website: [www.postlech.com](http://www.postlech.com)

 @postlech  postlech

Vorarlberger Landes- und Hypothekenbank AG  
Bank account: 18422393117  
BIC (Swift): HYPVAT2BXXX  
IBAN: AT33 5800 0184 2239 3117

### GDS Codes

Amadeus – 1A WBZRST03  
Apollo – UA WB15136  
Sabre – AA WB16199  
Worldspam – TW WBAT03



## Significant information

The "Post" has developed over many decades and is still very much an authentic hotel. That's why each guest room is individual. Each has its own features.

The examples shown here are not binding for all rooms in the respective category. We cannot guarantee availability

Breakfast can be offered to your clients for Euro 30.00 in summer and for Euro 35.00 in winter. Half board is Euro 95.00 in summer and Euro 100.00 in winter. Prices are per person per night and are not commissionable.

Half board can either be enjoyed for lunch or dinner on the same day. We kindly ask guests to contribute to the sophisticated atmosphere by dressing elegantly for dinner. It is not possible to change the arrangement during the stay or to claim a refund for any half board services which are not used.

We would like to politely inform you that the entire hotel "Post" is a non-smoking hotel and therefore, smoking is prohibited in all our rooms. As an alternative we are happy to prepare a nice spot for our guests on our terrace.

Dogs are permitted in all guest rooms, in all restaurants and on the terrace. There is a daily supplement charge per dog of Euro 45.00 in summer and Euro 48.00 in winter. (excluding food)

We are happy to reserve a parking space for our guests in our own garage at a daily cost of Euro 35.00 in summer and Euro 36.00 in winter. (one car wash included)

The rooms are available from 4 pm on the day of arrival. On the day of departure rooms should be vacated by 11 am. A special changing room is available for early arrivals and late departures.

Reservations are confirmed after receipt of a 50% deposit. The other 50 % of the lodging costs have to be paid at least 30 days before the arrival of the guests.

All cancellations must occur in writing. No fee is charged up to 100 days prior to arrival. Up to 50 days prior to arrival, 50% of the package rate will be charged. In the event of cancellations at short notice or premature departure, 100% of the package rate will be charged. Any unused services will not be refunded in cash. Guests may take out travel insurance to cover any cancellation fees. We accept EC cards and all current credit cards for the payment of bills.

All rates plus local tax of Euro 4.60 per person per night in summer and Euro 5.00 per person per night in winter and 4% handling fee for third party expenses.

We look forward to welcoming your clients at Post Lech Arlberg.